

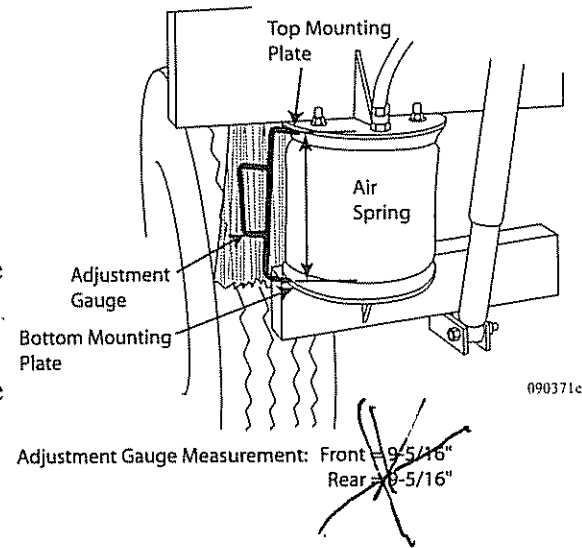
Adjusting Ride Height (Units Without Air Leveling System Only)

To adjust the suspension ride height begin with:

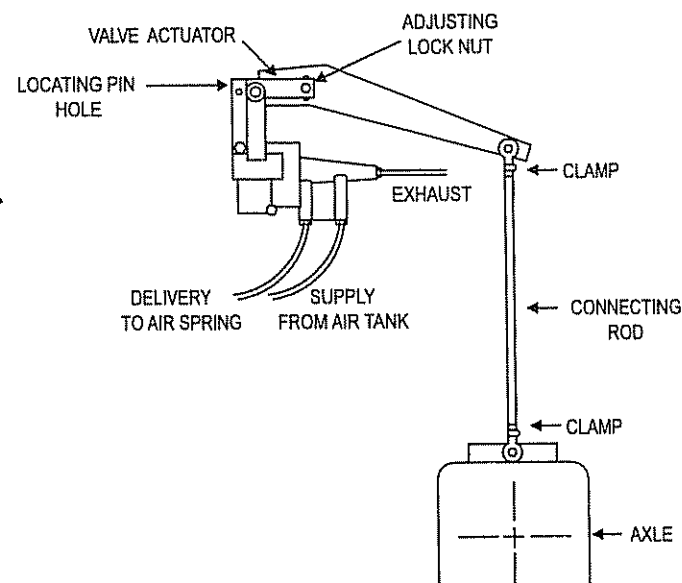
- The motorhome on flat level surface.
- Air system fully charged.
- Suspension at normal ride height.
- Air Level System in travel mode.

Start by checking the distance in the front.

1. Measure the distance between the lower air bag mounting plate and the upper air bag mounting plate of the air springs.
2. If the measurement is off, loosen the adjusting lock nut at the eccentric slot on the valve.
3. Move the plastic arm up to raise suspension height, this will inflate the front air springs. Move the plastic arm down to lower suspension height, this will deflate the air springs. Make adjustments in small increments.
4. After obtaining the specified distance, insert a 1/8" or 7/64" inch twist drill bit into the plastic arm and valve body. This will center the travel of internal piston. Tighten adjusting lock nut between 60-80 in/lbs.
5. Check adjustments made by using the Air Dump switch to deflate air springs. Start the engine and allow the air system to become fully charged. Allow the suspension to reach a neutral setting.
6. Re-check the suspension height measurement. Follow the same procedure for each rear control valve.
7. Re-check the front suspension height after adjusting the rear height control valves.



NOTE: Do not modify length of the linkage rods. Make any necessary adjustments using eccentric slot on the ride height control valve.



1991-2006
RIDE HEIGHT CHART

TO CHECK RIDE HEIGHTS: MEASURE FROM
BOTTOM OF TOP BAG PLATE TO THE TOP OF THE
BOTTOM BAG PLATE

For 2007 Diplomat SFT
Ride height is

8 5/16 front, and
9 3/16 rear.

The measurement is the actual bag height.
Measured from the bottom of the top mounting plate
to the top of the bottom mounting plate.

